

JVC

KV-DR305W

Dashboard Camera

INSTRUCTION MANUAL



FCC WARNING

This equipment may generate or use radio frequency energy. Changes or modifications to this equipment may cause harmful interference unless the modifications are expressly approved in the instruction manual. The user could lose the authority to operate this equipment if an unauthorized change or modification is made.

FCC NOTE

This equipment has been tested and found to comply with the limits for a Class B digital device, pursuant to Part 15 of the FCC Rules. These limits are designed to provide reasonable protection against harmful interference in a residential installation.

This equipment may cause harmful interference to radio communications, if it is not installed and used in accordance with the instructions. However, there is no guarantee that interference will not occur in a particular installation. If this equipment does cause harmful interference to radio or television reception, which can be determined by turning the equipment off and on, the user is encouraged to try to correct the interference by one or more of the following measures:

Reorient or relocate the receiving antenna.

Increase the separation between the equipment and receiver.

Connect the equipment into an outlet on a circuit different from that to which the receiver is connected.

Consult the dealer or an experienced radio/TV technician for help.

FCC COMPLIANCE NOTICE

DASHBOARD CAMERA, MODEL KV-DR305W WITH CAR BATTERY ADAPTOR
THIS DEVICE COMPLIES WITH PART 15 OF THE FCC RULES. OPERATION IS SUBJECT TO THE FOLLOWING TWO CONDITIONS:
(1) THIS DEVICE MAY NOT CAUSE HARMFUL INTERFERENCE, AND
(2) THIS DEVICE MUST ACCEPT ANY INTERFERENCE RECEIVED, INCLUDING INTERFERENCE THAT MAY CAUSE UNDESIRABLE OPERATION.

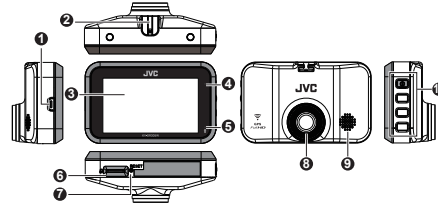
JVC KENWOOD USA CORPORATION
PO BOX 22745 LONG BEACH, CA 90801-5745 PHONE: 1-800-252-5722

Complies with
IMDA Standards
DB02771

CAN ICES-3(B) / NMB-3(B)

© 2020 JVC KENWOOD Corporation

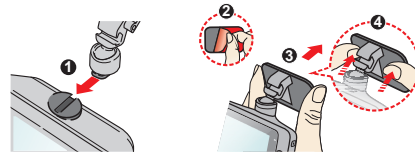
Getting to Know Your Device



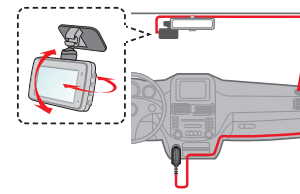
- 1 Mini-USB connector
- 2 Device mount socket
- 3 LCD screen
- 4 System indicator
- 5 Microphone
- 6 Memory card slot
- 7 Reset button
- 8 Camera lens
- 9 Speaker
- 10 Power button / Function keys

How to install

1. Make sure that your car is parked on level ground. Use a commercially available cleaning cloth to wipe off any dirt or grease from the location you are mounting the device. Follow the instructions below to securely mount your device in a vehicle.



2. Adjust the lens angle. When adjusting the angle of mounting, make sure that the camera's view is parallel with the level ground and the ground/sky ratio is close to 6/4.
3. Connect the cables. Route the cables through the top ceiling and the A-pillar so that it does not interfere with driving. Make sure that the cable installation does not interfere with the vehicle's airbags or other safety features.



Using a Memory Card

You must insert a memory card before you can start recording. You should use separate MicroSD cards for recording and for regular data storage.

Hold the card (MicroSD) by the edges and gently insert it into the slot as shown in the illustration.

To remove a card, gently push the top edge of the card inwards to release it and pull it out of the slot.

Formatting a Card

To format a memory card (all data will be erased), press > **Format**.

Note:

- DO NOT apply pressure to the centre of the memory card.
- The manufacturer does not guarantee the product's compatibility with memory cards from all manufacturers.
- Before you start recording, please format the memory card to avoid malfunction caused by files not created by the device.
- Turn the device off before removing the memory card.

Turning the Device On

Complete the installation according to the instructions in the "Using your device in a vehicle" section. Once the vehicle engine is started, the device automatically turns on. The System indicator glows in green when the device is powered.

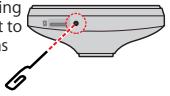
Power Button

Press and hold the Power button for 2 seconds to manually turn the device on and off.

Shutting down the Device

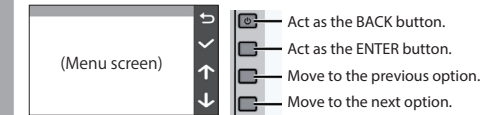
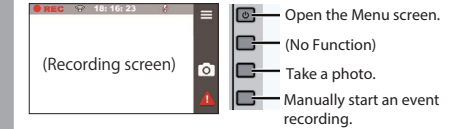
Occasionally, you may need to perform a hardware reset when the device stops responding or if it appears to be "frozen" or unresponsive. To shut down the device, press and hold the Power button until the system powers off.

If the system does not shut down by keeping the Power button pressed, you can force it to shut down by inserting a small rod (such as a straightened paperclip) into the Shutdown button on the device.



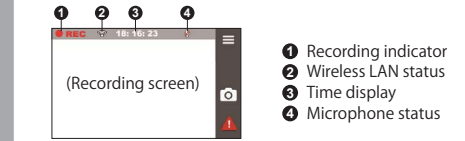
Function Keys

The device provides 4 function keys to control the corresponding icons displayed on the LCD screen. The keys' functions may vary on different screens.



System Icons

Various system icons on the status bar at the top of the screen provide the status information of your device. The display icons will vary depending on your device model and state.



Setting the Date and Time

To make sure that the date and time of your recordings are correct, check the settings before you begin recording.

1. Press to access the Settings Menu.
2. Select **System** > **Date/Time**.
3. Use to adjust the date and time, then press and repeat the step until all fields have been changed.
4. When done, press .

Recording in Driving Mode

Continuous Recording

By default, the system will automatically begin continuous recording shortly after start-up. The System indicator flashes in green and amber alternately while the recording is in progress.

The recording may be divided into several video clips; recording will not stop between video clips. When your memory card fills up with continuous recordings, it will automatically record over the oldest existing files in this category.

When continuous recording is in progress, you can manually stop recording by pressing . Press to return to the recording screen, the system will start continuous recording automatically.

The continuous recordings can be found in the "Video" category for file playback.



5 615 N 6 690 001 R 00

Event Recording

By default, if an event happens such as a sudden impact, high speed driving, an aggressive turn or an accidental crash during continuous recording, the G sensor will prompt the device to start recording the event.

Note:

You can change the sensitivity level of the G sensor by selecting > **Video Recording** > **G-Sensor Sensitivity**

If you want to manually start an event recording while continuous recording is in progress, press the Event button ().

The event recording will save moments before and moments event. When your memory card fills up with event recordings, it will record over the oldest existing files in this category.

The event recordings can be found in the "Event" category for file playback.

Camera Mode

The device allows you to take a photo. Do one of the following:

- If the recording is in progress, press to take a photo.
- Press > **Camera** > .

The photos can be found in the "Photo" category for file playback.

Playback Mode

To select a video or photo for playback:

1. Press > **File Playback**.
2. Select the desired type.
3. Select the desired file from the list and then press to start playback.
4. During playback, you can:
 - While playing videos
 - Press to play the previous/next video; press and hold the buttons to fast rewind/forward the video.
 - Press to return to the list.
 - Press to display the pop-up menu to select:
 - Play / Pause:** Start or pauses the playback.
 - Move to Event:** Move the file to the "Event" category.
 - Transfer to phone:** Upload the selected video to your smartphone.
 - Delete:** Delete the file.
 - While viewing photos
 - Press to display the previous/next photo.
 - Press to return to the list.
 - Press to display the pop-up menu to select:
 - Transfer to phone:** Upload the selected photo to your smartphone.
 - Delete:** Delete the file.

Getting Connected

JVC DVR Link

The JVC DVR Link app is an integrated application that allows you to view, share and back up the videos recorded on a dashboard camera via wireless LAN. Search for "JVC DVR Link" in Apple App Store or in Google Play Store to download the app for free.

Note:

- The JVC DVR Link app is compatible with iOS 9.0 (and above) and Android 5.0 (and above) devices. JVC KENWOOD does not guarantee the product's compatibility with smartphones from all manufacturers.
- App Store is a service mark of Apple Inc., registered in the U.S. and other countries.
IOS is a trademark or registered trademark of Cisco in the U.S. and other countries and is used under license.
Android and Google Play are trademarks of Google LLC.

Setting up a Wireless Connection

On your device, select > **Wireless LAN** > **On** to enable the wireless LAN mode. Once enabled, the wireless LAN setting screen displays the SSID and password of the device.

On your smartphone, follow the steps to set up the wireless connection.

1. Enable the wireless LAN function on the smartphone.
2. Open the JVC DVR Link app and follow the on-screen instructions to set up the connection.
Open the wireless LAN setting of the smartphone to display the detected devices. From the list, select the device you want to connect to and then enter the password.
The next time you use your smartphone to connect to the device, you will not be prompted to enter the password again unless you reset your phone to the factory default settings.

Note: The instructions about operating the smartphone are for reference only. The actual setting options and methods may vary depending on your phone type/model and the app version.

